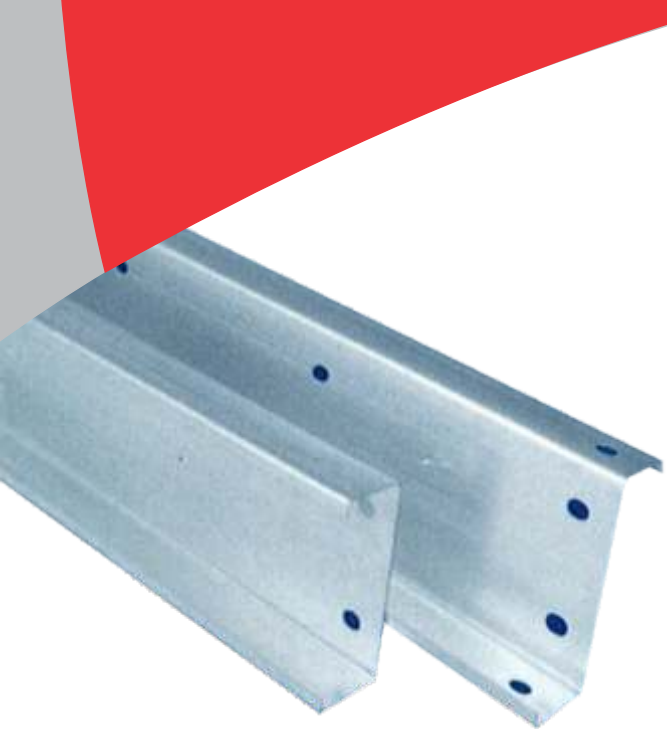




MULTI FRAME

Solar Panel Mounting System

STEEL STRUCTURE



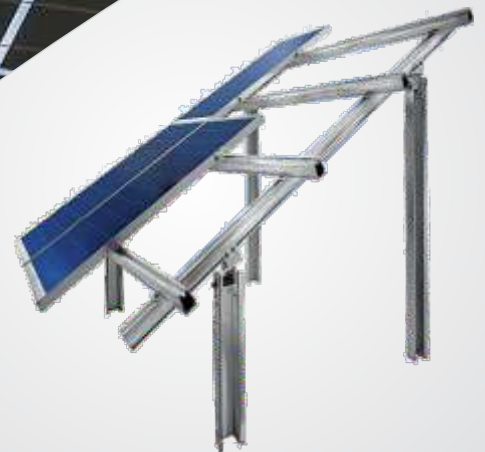
Technical support from

posco

Using **PosMAC®** Steel

* PosMAC® is the registered trademark of POSCO.

* PosMAC® is a coined name applied to hot-dipped zinc-aluminium-alloy-coated steel sheets developed by POSCO.





ABOUT OUR COMPANY

Multicolor® Steels, since 1994, has been a pioneer leader in India in the field of Metal Roofing, Wall Cladding Systems and Pre-Engineered Metal Buildings. We offer complete turnkey solutions from conceptualization to designing, manufacturing and erection with the strength of 300 technical staff and more than 1000 workers.

With our Head Office at New Delhi, and two manufacturing units at Bawal and IMT Manesar, Haryana, India with sales exceeding 200cr, Multicolor Steels is expanding with ambitious growth plans.

BAWAL FACTORY



MANESAR FACTORY



Designer
Pre-Engineered
Buildings

Structural
Fabrication

Portable
Buildings

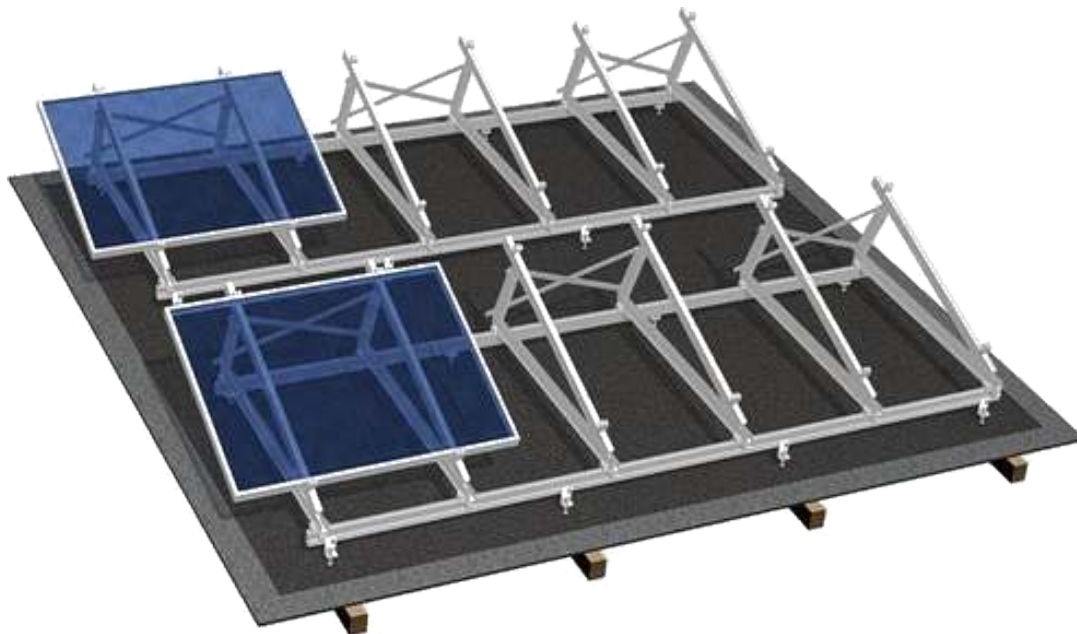
We
Specialise In

Roofing &
Walling

Insulated
Sandwich
Panels

Steel
Decking
Profiles

MULTI-FRAME COMPONENTS



Multi-Cee, Multi-Zed and other sections are structural steel members designed and produced using advanced technology, quality and customer oriented services for use as firm and long lasting supports for economical solar panel mounting systems on any type of building/ ground support.

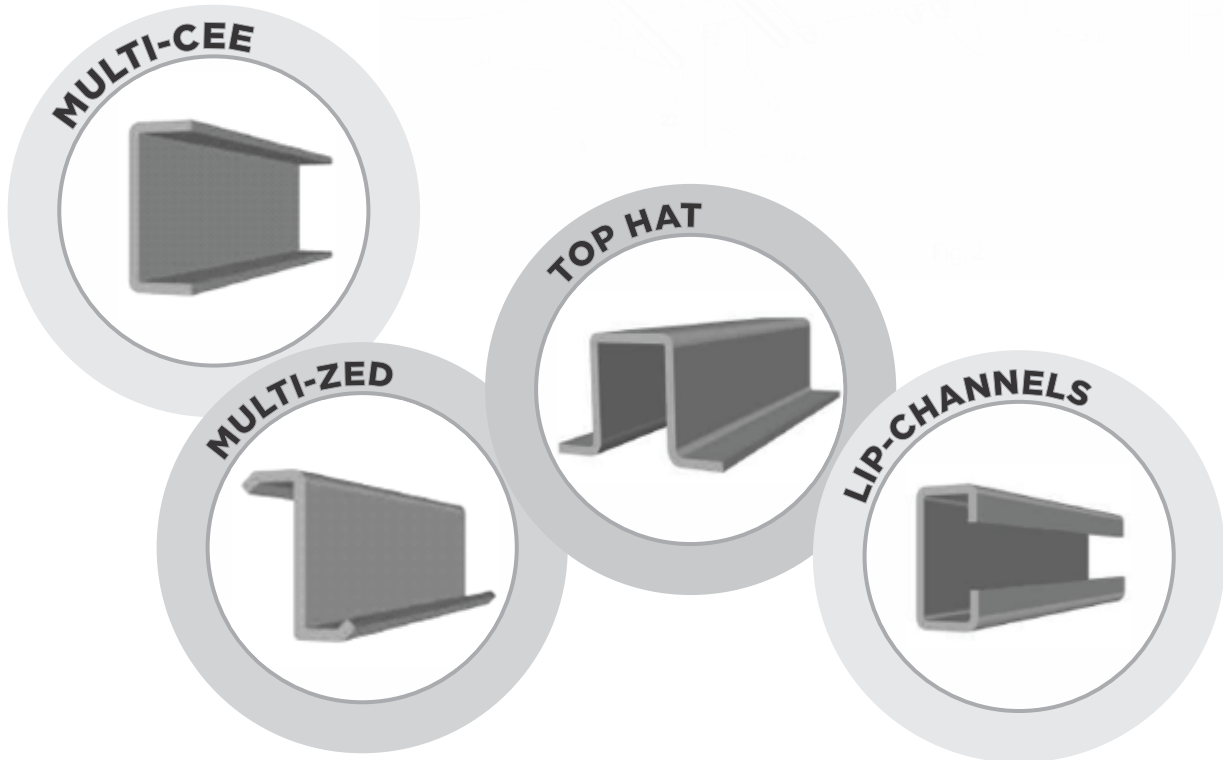
Multi-Cee & Zed Sections



Holding Clips for Roof Tops



PRODUCTS



SPECIFICATIONS

Thickness:

1.2mm to 4mm

Length:

Upto 12000mm

Material:

CR Steel, HR Steel,
Galvanized Steel/Color coated

Yield Strength:

245 MPa to 345 MPa, 550 MPa

Type:

PosMAC, Bare Galvalume,
Pre-galvanized and Hotdip galvanized

Galvanization Thickness:

10 microns – 120 microns

ADVANTAGES

- Ability to span long lengths using high tensile steel
- PosMAC® Steel used has 3-4 times more life than GI coated steel
- Light Weight hence Low Handling and Transportation Cost
- Tailor-made section lengths hence No Wastage
- Cost effective as steel structures have the best stiffness/price ratio
- Structures are well protected against adverse climate conditions.
- No site drilling/cutting required
- 25 years of maintenance-free life
- Easy & Fast to Assemble.

INTELLIGENT ROLL FORMING

Multi-Zed, Multi-Cee and other profiles are Roll Formed/bent using High Quality CNC machines with online measuring, cutting, punching and forming to give the Best Quality Product.

Surface Treatment

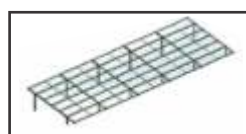
- Multicolor offers PosMAC® which is ternary alloy coated steel (Zn- 3%Mg- 2.5%Al) with high corrosion resistance developed with POSCO's own technology that is 5 to 10 times stronger resistant than that of a normal hot-dip galvanized steel sheet [GI, GI(H)] with the same coating weight.
- Multicolor offers Cee & Zed in Galvanised coated Steel in 175GSM / 275GSM / 550GSM Coating as per customer requirement for high corrosion environment.
- Multi-Zed and Multi-Cee made of Hot Rolled Coils are degreased, phosphated and then primer finished with Zinc Chromate Red Oxide Paint- matching test requirement of IS:4777 and IS:2074.

Special Treatment to combat severe atmosphere corrosion can be offered.

DESIGNS OF STRUCTURE



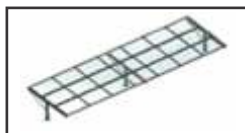
Seasonal Tilt



Double Pole Static Structure



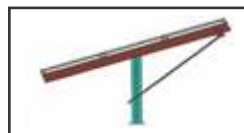
Roof Top Structure



Seasonal Tilting Structure



Single Pole Static Structure



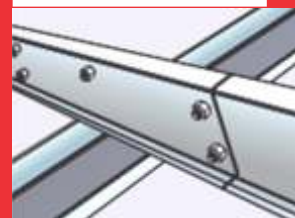
Single Pole Tilting Structure

Multicolor Steels (India) Pvt Ltd is engaged in erection of **Multi-Frame: Solar mounting structures** across India. Our technical experts and consultants have rich experience in erection of these structures which can ensure great quality and convenient usage. To meet our customer's special requirements, our strong engineering team also provides customized solutions.

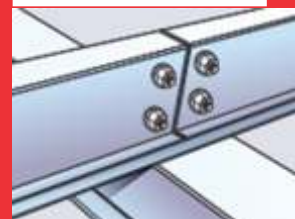
SYSTEMS OF CONNECTIONS

There are three systems of connections based on design of purlins and its connections.

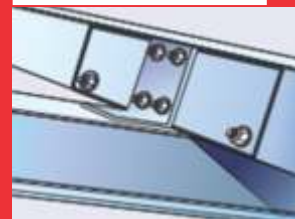
OVERLAPPING



BUTT CONNECTION



SLEEVE CONNECTION



ABOUT **PosMAC®**?

PosMAC (POSCO Magnesium Aluminium alloy Coating product) is a ternary alloy coated steel (Zn- 3%Mg- 2.5%Al) with high corrosion resistance developed with POSCO's own technology.

Product Characteristics

- PosMAC is a corrosion resistant product that has 5 to 10 times stronger resistance than that of a normal hot-dip galvanized steel sheet [GI, GI(H)] with the same coating weight.
- The same processing, assembly and painting process can be applied to PosMAC as one would apply to GI.

High Tensile Steel : High tensile steel 550mpa is recommended for better strength and light weight.

Warranty : Manufacturer provides warranty of 15 years and 25 years for PosMAC® Steel.

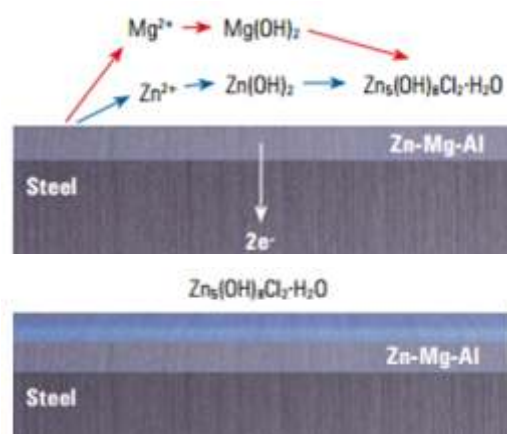
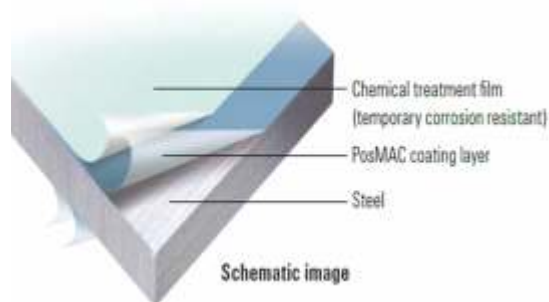
Why **PosMAC®** has excellent corrosion resistance?

The magnesium (Mg) in PosMAC's coating layer will accelerate the formation of a dense corrosion product called "Simonkolleite ($\text{Zn}_5(\text{OH})_8\text{Cl}_2 \cdot \text{H}_2\text{O}$)" which is extremely stable. When simonkolleite is formed on the surface of the coating layer in a film-like-form, it plays a role of a corrosion inhibitor for the base metal.

In addition, the upper coating layer can be dissolved to cover the cross-section and accelerate the growth of a stable corrosion product. However red-rust can be found in the already exposed steel plate, but fortunately, the film of the corrosion products covers the cross-section and serves to prevent corrosion.

Technical support from

posco



* PosMAC® is the registered trademark of POSCO.

* PosMAC® is a coined name applied to hot-dipped zinc-aluminium-alloy-coated steel sheets developed by POSCO.

STRUCTURAL SUPPORT FOR ROOF TOP SOLAR PANELS



Special Holding Clips

MULTI FRAME

Solar Panel Mounting System

STEEL STRUCTURE



**MULTICOLOR STEELS
(INDIA) PVT. LTD.**

White House, 1/18-20,
Rani Jhansi Road,
New Delhi - 110055 India

Mob: 7827313233
Tel: 011-30511200
Fax: 91-11-23513660

E-mail:
contact@multicolorsteel.com

Website:
www.multicolorsteel.com



Our Branches

Service Points



PRE-ENGINEERED BUILDINGS



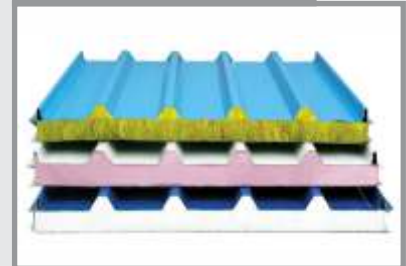
Our Products



STEEL DECK FLOOR SYSTEM



SANDWICH PANELS



METAL ROOFING & WALL CLADDING



PORTABLE BUILDINGS

